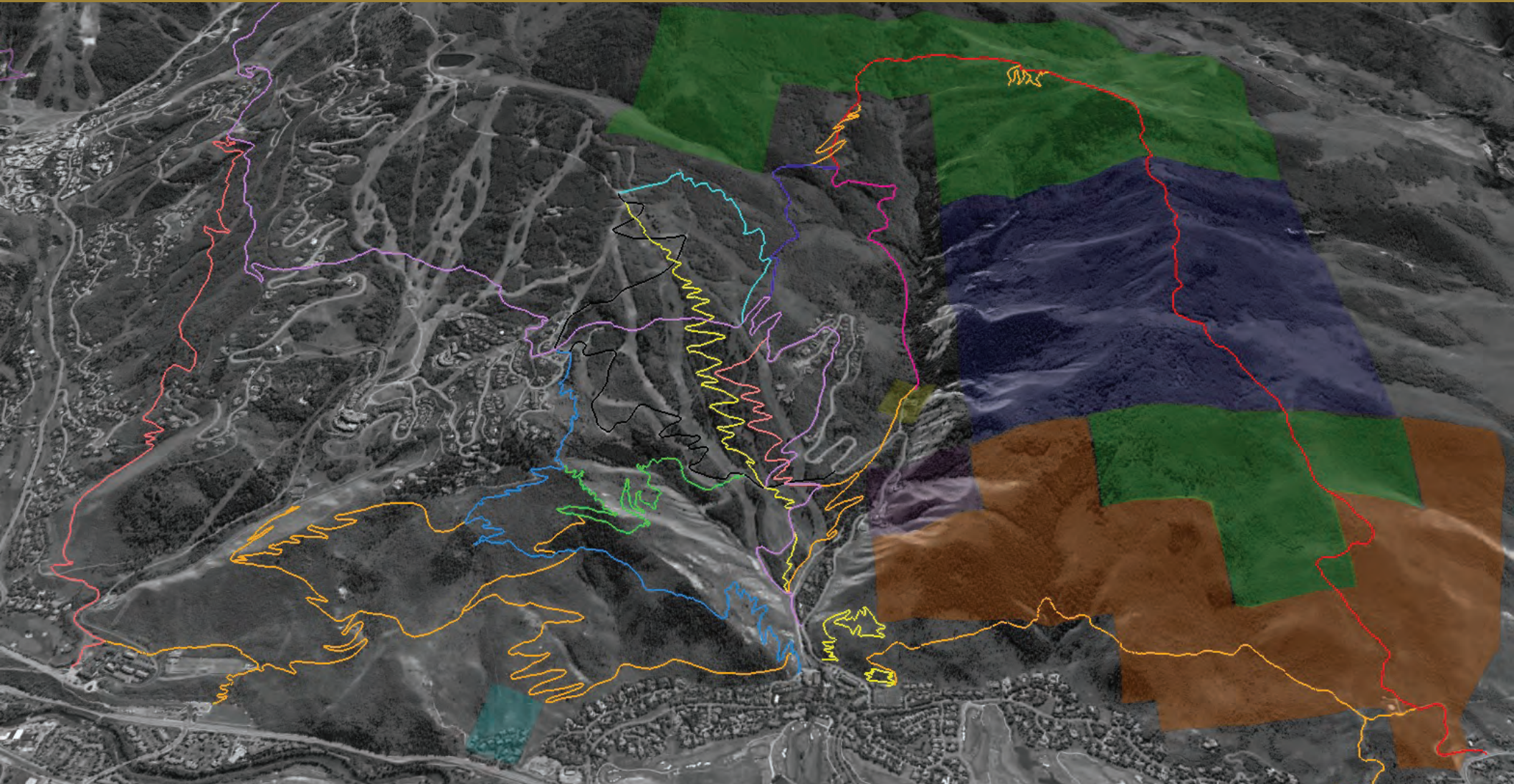


Master Trails Plan



ARROWHEAD AT VAIL



VVMNTA
Vail Valley Mountain Trails Alliance

Arrowhead Trail System - Vision

A Vision for Arrowhead's Trail System

A system of soft-surface trails that is safe for all users and enjoyed by homeowners, members, and the general public. Through best practices in design, signage, and education, trail users with diverse needs and ability levels can safely recreate on trails in the Arrowhead area.

Arrowhead Hiking Committee and the Arrowhead Trails Adopt A Trail volunteer team will continue to manage existing trails, plan and build new trails, and educate trail users on safety, awareness, and trail etiquette. Proper signage and outreach will make trails easy to find and follow.

Connectivity for the summer and winter are key. Trails provide safe, non-vehicular connections between neighborhoods and surrounding communities. Trails provide a connection to nature and improve physical and mental health.

All trails are designed and constructed to respect and protect sensitive wildlife habitat and terrain and include seasonal wildlife closures during the critical winter and calving seasons. At the same time, trail opportunities for year round recreation exist for all users.

Trails in Arrowhead are planned in coordination with Vail Resorts, Arrowhead HOA, Arrowhead Metro District, and surrounding property owners and land managers such as Homestead HOA and the United States Forest Service.

Safety

- Goal to minimize user conflict through user specific trails, directional, signage, education, and trail maintenance
- Reduce number of bikers on Cresta Rd. mitigating vehicle/bike conflicts
- Reduce number of mountain bikers descending Ute Trail by providing alternate opportunities

Connectivity

- Expand existing trail system to connect to Arrowhead's neighborhoods as well as surrounding communities
- Provide connectivity to promote loop options in the summer and winter
- Creates beginner trail loop options as well as advanced loop options

Sustainability

- Continue to maintain existing trails through Arrowhead Trails volunteer Adopt A Trail team
- Design and construct new trails that meet sustainable trail building practices (grades, terrain, drainage, etc.)
- Ensure protection of important wildlife habitats and wildlife populations

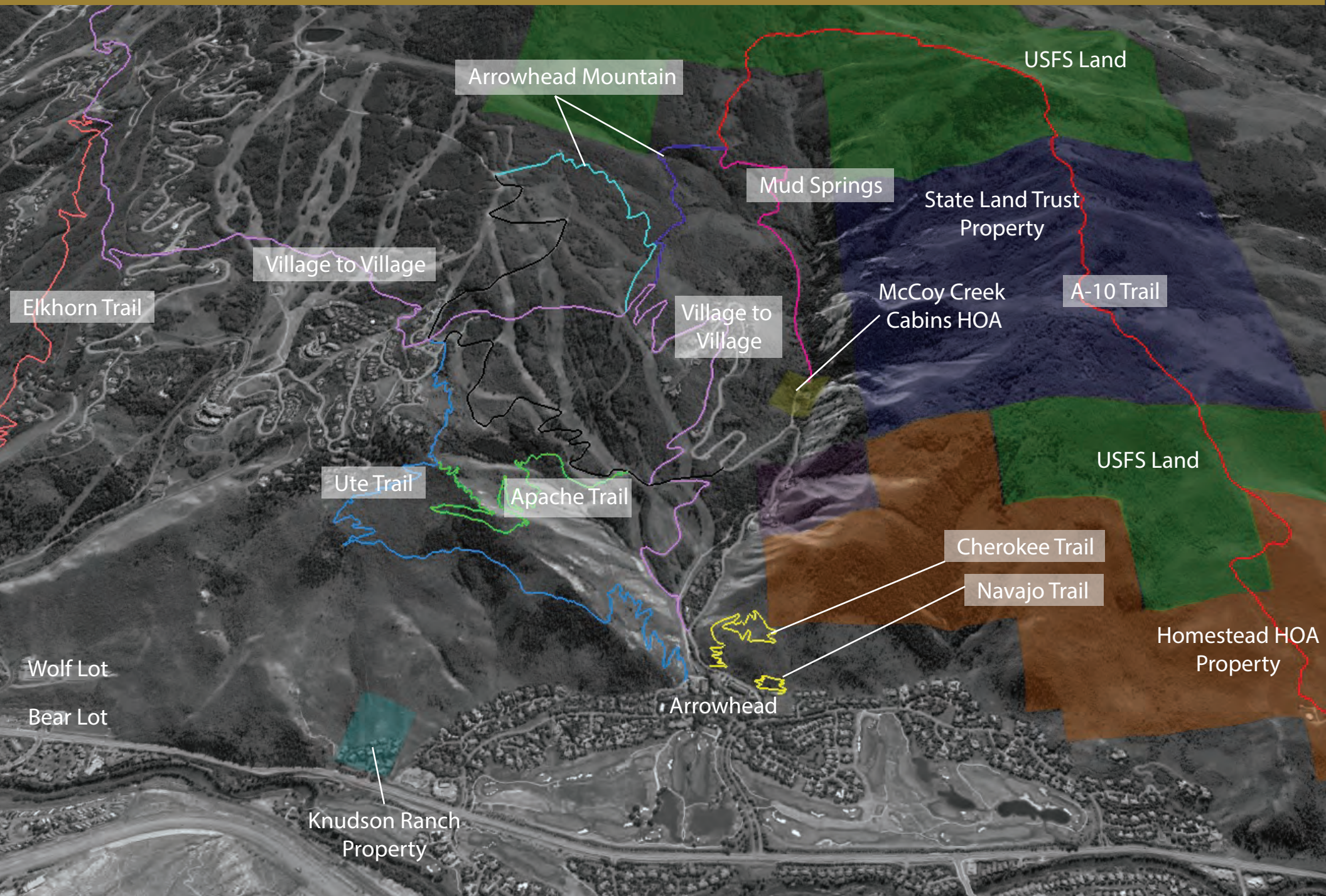
Conceptual Trails

- Trails are located such that it may be feasible through design, construction, or management to minimize, mitigate, or eliminate adverse impacts to sensitive areas, winter operations, and wildlife
- The trail be designed and constructed to be safe for all intended uses
- The trail improves or expands recreational opportunities for one or more user groups
- The trail improves neighborhood connectivity or provides beneficial linkages between existing trails

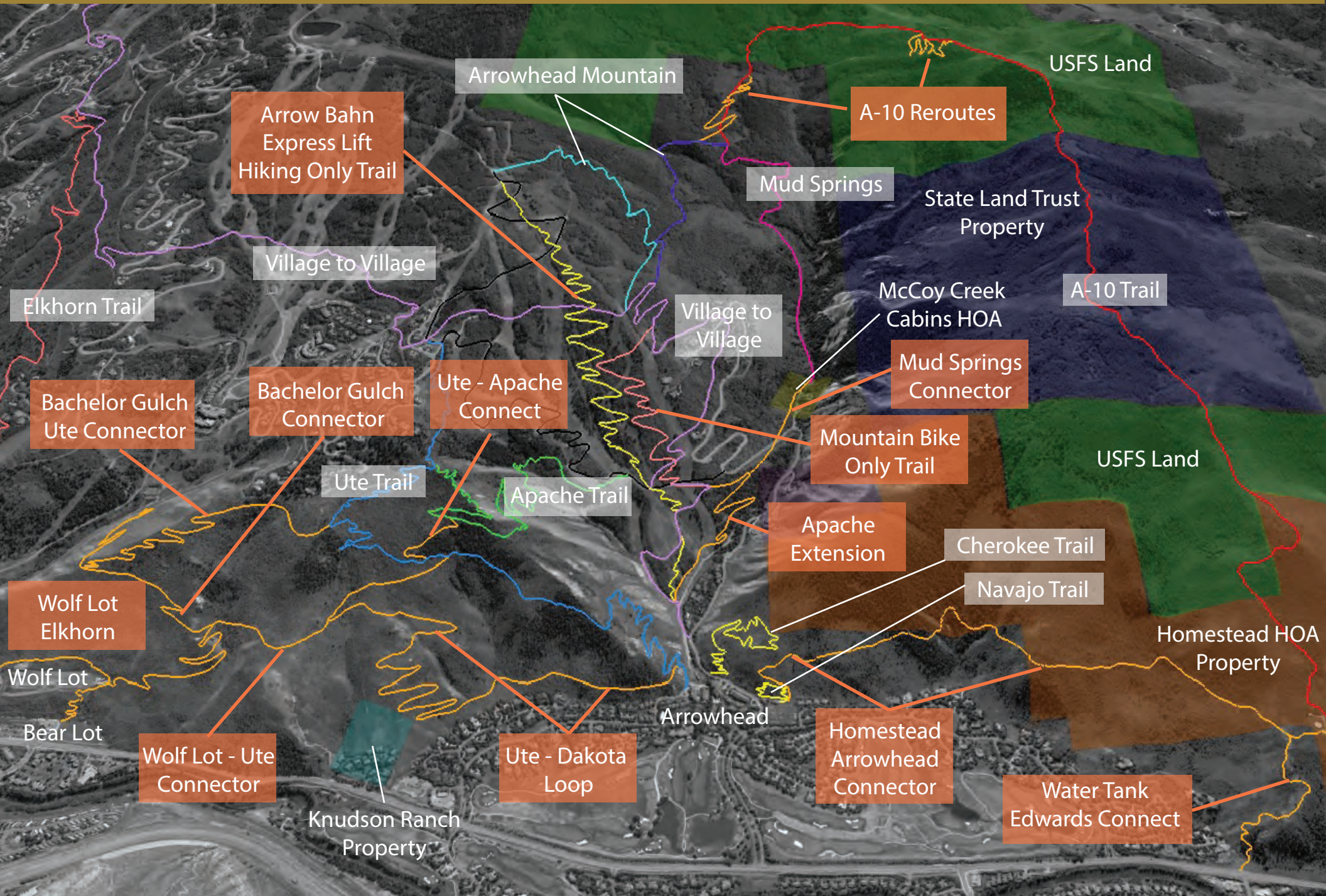
Diversity

- Reduce user conflict by providing a variety of trail types
- Provide beginner to advanced trail types for all trail users
- Consider winter opportunities such as snowshoeing, skinning, cross country skiing when designing/building summer trails

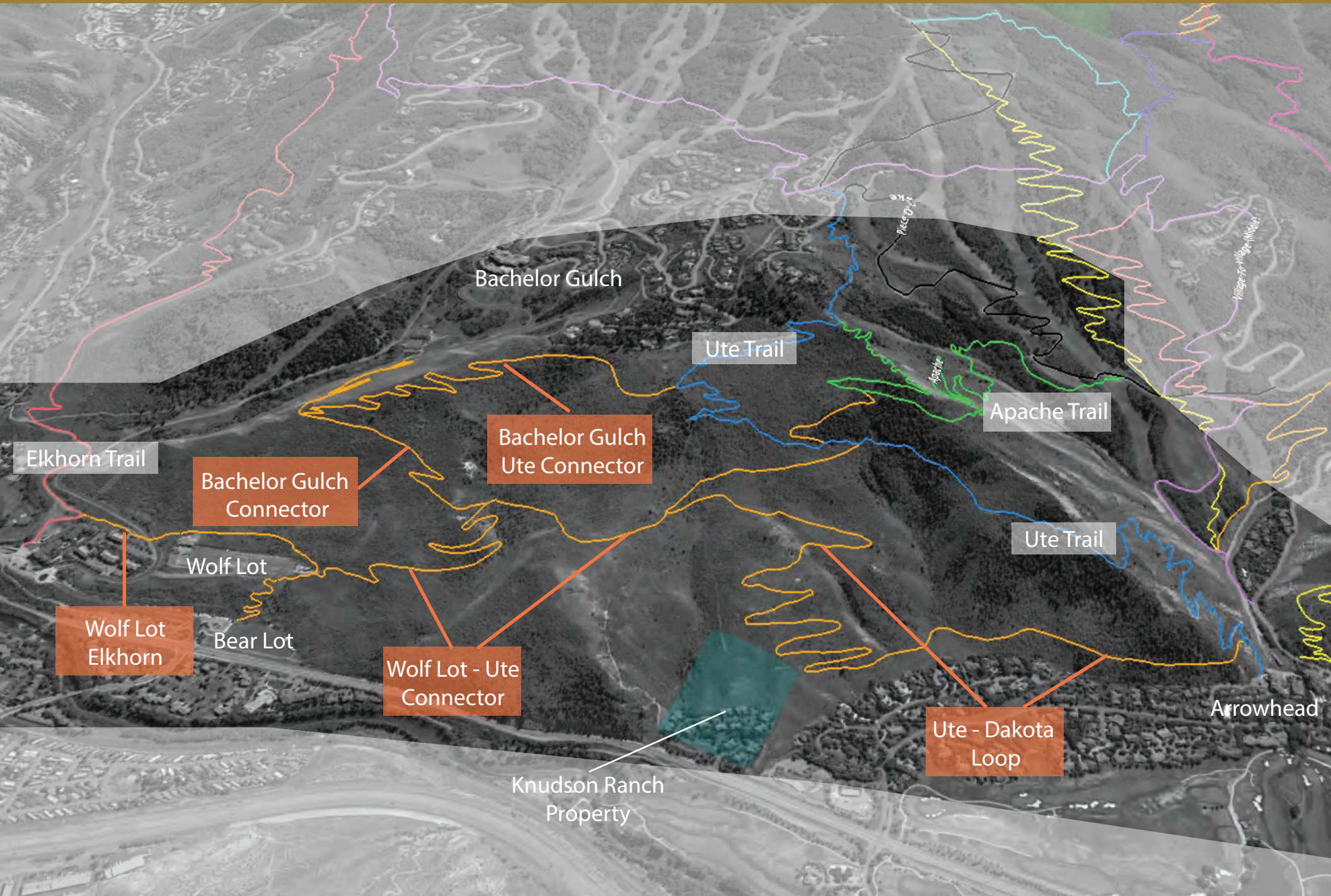
Arrowhead Trail System - Existing Trails



Arrowhead Trail System - Overview



Arrowhead Trail System - East



Elkhorn Trail

Bachelor Gulch Connector

Bachelor Gulch Ute Connector

Ute Trail

Apache Trail

Ute Trail

Wolf Lot Elkhorn

Wolf Lot
Bear Lot

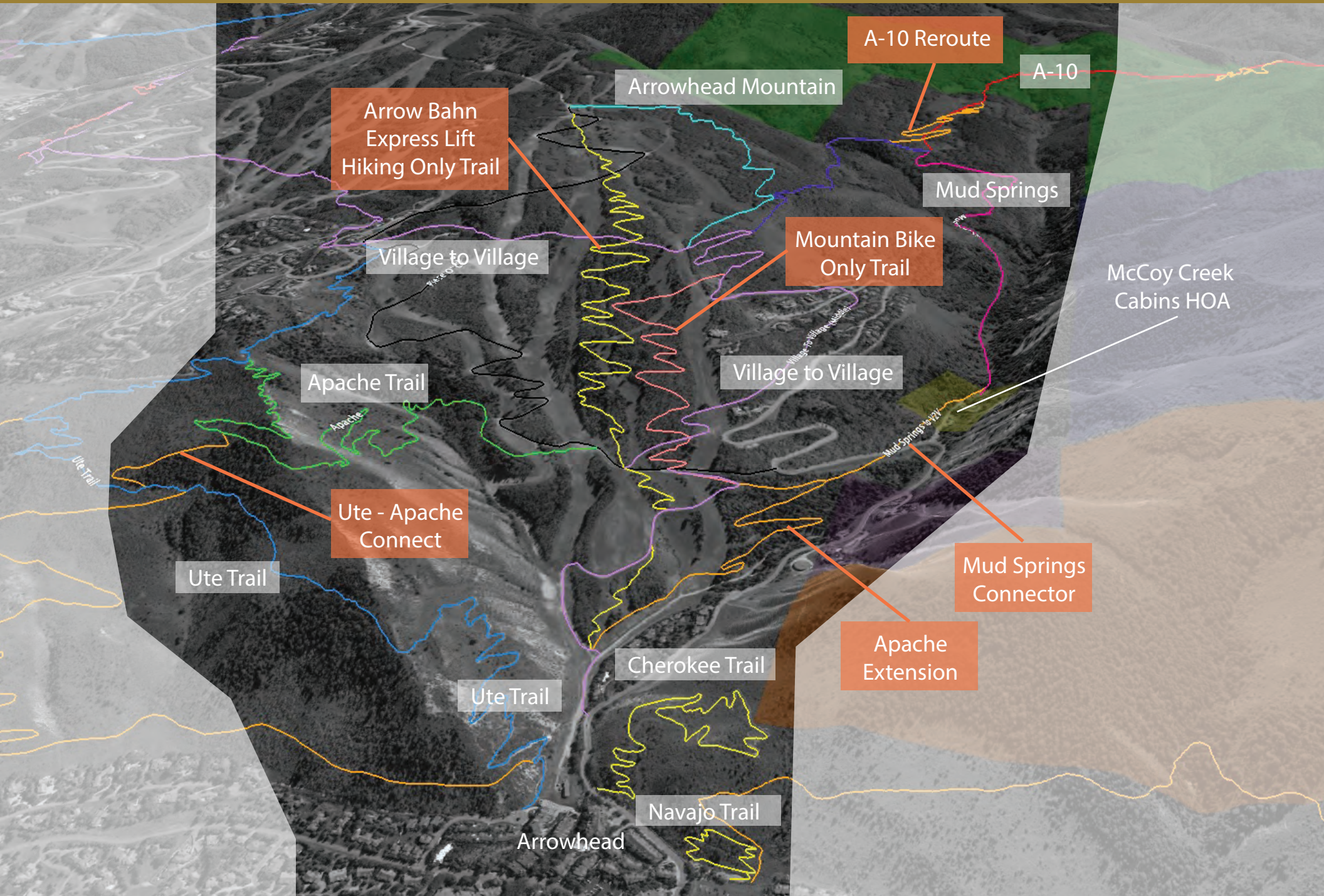
Wolf Lot - Ute Connector

Ute - Dakota Loop

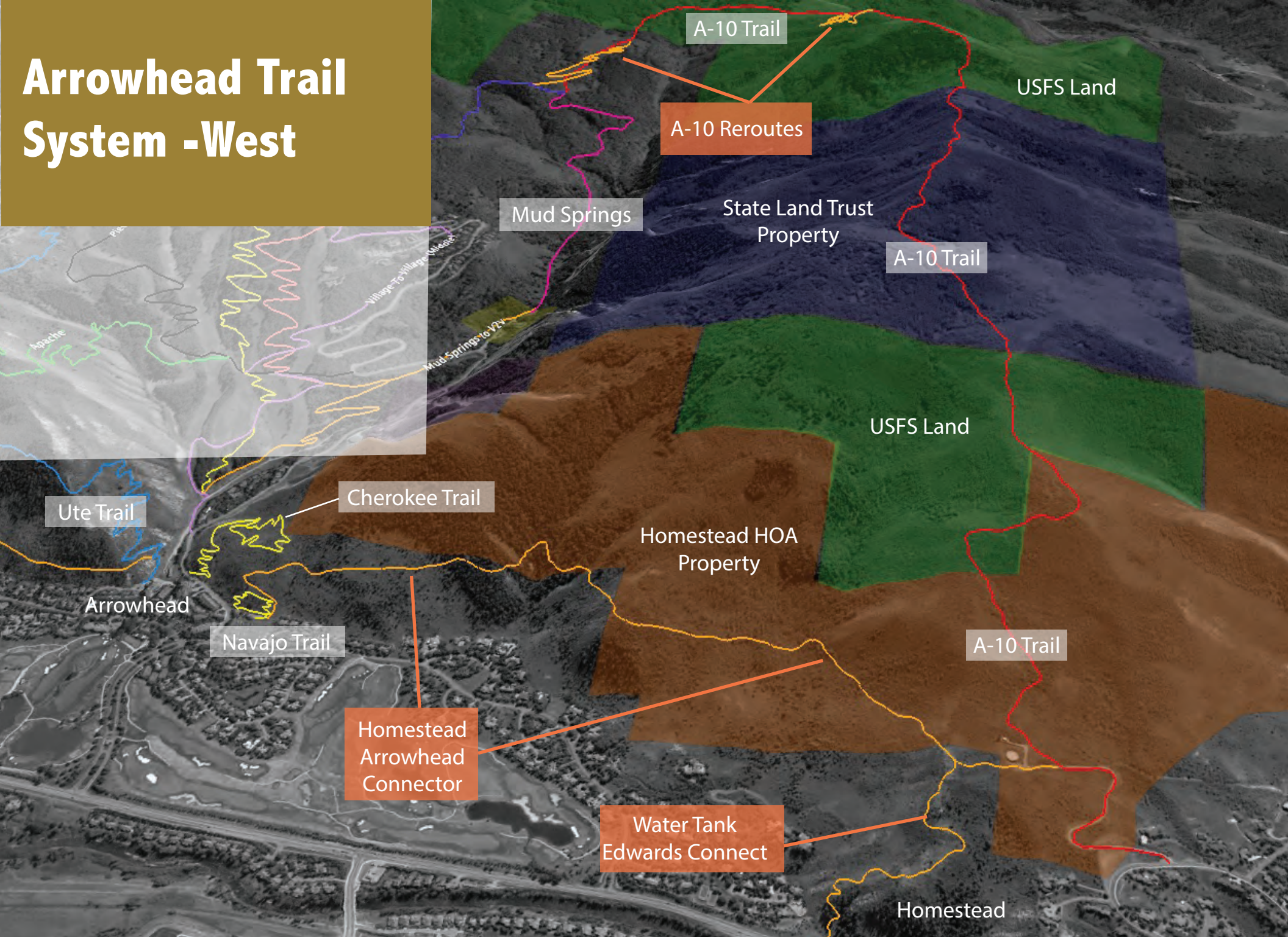
Arrowhead

Knudson Ranch Property

Arrowhead Trail System - Central



Arrowhead Trail System - West



A-10 Trail

A-10 Reroutes

USFS Land

Mud Springs

State Land Trust Property

A-10 Trail

USFS Land

Ute Trail

Cherokee Trail

Homestead HOA Property

Arrowhead

Navajo Trail

A-10 Trail

Homestead Arrowhead Connector

Water Tank Edwards Connect

Homestead

Arrowhead Trail System - Trail Descriptions

Apache Trail Extension

Extend the Apache Trail off of Piece O'Cake Road and off of lower Village to Village to improve the trail experience and promote mountain bikes to use this route as a downhill route. Connect Mud Springs to improve summer and winter user experience.

- Multi-use trail
- Bidirectional use
- No seasonal wildlife closure

Arrow Bahn Express Lift Hiking Trail

Hiking only trail beginning off of lower Village to Village and extending to the top of Arrow Bahn Express Lift. Trail similar to Berry Picker on Vail Mountain.

- Hiking Only
- Bidirectional use
- Seasonal Wildlife Closure: May 6 - June 30

A-10 Reroutes

Reroute existing sections of the A-10 Trail on Arrowhead Vail land and USFS land.

- Multi-use trail
- Bidirectional use
- Seasonal Wildlife Closure: April 15 - June 30

Bachelor Gulch Connector

Connecting trail off of proposed Wolf Lot Spur to allow users/homeowners to connect to lower Bachelor Gulch. Creates winter/summer loop options.

- Multi-use trail
- Bidirectional use
- Seasonal Wildlife Closure: May 6 - June 30

Bachelor Gulch - Ute Connector

Provides connection to Bachelor Gulch and additional loop options for both winter and summer routes.

- Multi-use trail
- Bidirectional use
- Seasonal Wildlife Closure: May 6 - June 30

Homestead Arrowhead Connector

A-10 Trail is anticipated to become a legal Forest Service system trail by 2023. This connection allows for a big loop from Arrowhead to Homestead and back. As well as a soft surface connection to Edwards and it's amenities.

- Multi-use trail
- Bidirectional use
- Seasonal Wildlife Closure: April 15 - June 30

Mud Springs Connector

Creates trail connection from Mud Springs to proposed Apache Extension. Desired connection by ski patrol and homeowners to move hikers/bikers off of Cresta Rd for safety concerns.

- Multi-use trail
- Bidirectional use
- Seasonal Wildlife Closure: May 6 - June 30

Mountain Bike Only Trail

Promotes mountain bikers to use this trail instead of descending Ute Trail. A mountain bike only trail will undoubtedly reduce user conflict on other hiking and multi-use trails.

- Mountain bike only
- Downhill suggested/recommended
- Seasonal Wildlife Closure: May 6 - June 30

Wolf/Bear Lot - Ute Connector

Provides connection options to Bachelor Gulch, Ute trail, Beaver Creek/Elkhorn trail.

- Multi-use trail
- Bidirectional use
- Seasonal Wildlife Closure: May 6 - June 30

Wolf Lot - Elkhorn Connector

Use existing social trail to connect Elkhorn Trail to the proposed Wolf Lot Spur. Opens up many trail loop options for all users.

- Multi-use trail
- Bidirectional use
- No seasonal wildlife closure

Water Tank - Edwards Connector

Provides a connection to the Arrowhead trail system for Edwards neighborhoods/residents

- Multi-use trail
- Bidirectional use
- Seasonal Wildlife Closure: April 15 - June 30

Ute - Dakota Loop Trail

Offers winter snowshoeing and summer hiking/biking loop and trail access to Dakota & Castle Peak neighborhoods.

- Multi-use trail
- Bidirectional use
- Seasonal Wildlife Closure: May 6 - June 30

Ute - Apache Connect

Offers winter snowshoeing and summer hiking/biking loop options and trail access.

- Multi-use trail
- Bidirectional use

Arrowhead Trail System - Priorities

Priorities - 2021

- Improve existing signage, identify signage opportunities, and create/install new signage
- Create Arrowhead Master Trails Plan
- Begin scouting and aligning new potential trails to be constructed in 2022
- Trail Maintenance: Volunteers will improve and maintain existing trails including weed management,

Priorities - 2022

- Begin to construct and complete 1-3 new trails in summer 2022
- Continue to scout and create potential new trail alignments per the conceptual trail alignments in the Arrowhead Master Trails Plan
- Continue to perform ongoing trail maintenance with volunteers and other available resources